



Industry

LENNTECH

info@lennotech.com

www.lennotech.com

Tel. +31-15-261.09.00

Fax. +31-15-261.62.89

- **Safety valves**

- Flanged page 70
- Threaded pages 70 to 71

- **Overflow valves** pages 71 to 72

- **Pressure reducing valves** pages 72 to 73

- **Gas equipment** pages 74 to 75

- **Steam equipment**

- Steam traps pages 76 to 77
- Pressure reducing valves page 78
- Separators page 79
- Air vents page 79

- **Compressed air equipment**

- Air treatment page 80
- Manometers page 80
- Drain valves page 81

- **Instrumentation**

- Sight glasses pages 82 to 83
- Level switches page 83
- Level gauges pages 83 to 84
- Flow meters page 85
- Manometers page 86

- **Fittings and couplings**

- Stainless steel threaded fittings pages 87 to 90
- Express fittings page 91
- Cam-lock couplings pages 92 to 94
- Symmetrical couplings pages 95 to 96

Safety valves

Flanged



ISO
9001



3.1

10 €/DN

6301 - Cast iron safety valve - Flanged PN16

Full lift - Cast iron GG25 body PN16 - Cast iron closed bonnet - Watertight cap - Testing lever - Stainless steel trim - Hardened seat and superfinished disc - Flange connections: inlet PN16 / outlet PN10/16 - Temperature range: +10°C/+200°C - TÜV SV 96.894 and VERITAS (marine and offshore use) certifications - Min. setting pressure: 0,5 bar.



Inlet DN	Outlet DN	Max. setting pressure (bar)	code	price €
20	32	16	250120	546,68
25	40	16	250125	600,22
32	50	16	250132	639,08
40	65	16	250140	821,66
50	80	16	250150	960,74
65	100	16	250165	1 376,88
80	125	16	250180	1 720,16
100	150	16	250190	2 426,54
125	200	12,5	250191	3 621,20
150	250	10	250192	5 368,00

Mandatory certificate 14 €/pc included in price

6301 S - Ductile iron safety valve - Flanged PN40

Full lift - Ductile iron GGG40 body PN40 - Cast iron closed bonnet - Watertight cap - Testing lever - Stainless steel trim - Hardened seat and superfinished disc - Flange connections: inlet PN40 / outlet PN10/16 - Temperature range: -10°C/+350°C - UDT 1413 certification - Min. setting pressure: 0,5 bar.



Inlet DN	Outlet DN	Max. setting pressure (bar)	code	price €
20	32	40	250220	681,20
25	40	40	250225	699,40
32	50	40	250232	839,80
40	65	32	250240	968,50
50	80	32	250250	1 092,00
65	100	32	250265	1 798,00
80	125	25	250280	2 340,00
100	150	20	250100	3 462,00

Mandatory certificate 14 €/pc included in price

6302 - Carbon steel safety valve - Flanged PN40

Same as 6301 except: carbon steel 1.0619 body PN40 - Carbon steel closed bonnet or open bonnet - Flange connections: inlet PN40 / outlet PN10/16 - Temperature range: -10°C/+300°C for closed bonnet, -10°C/+425°C for open bonnet - TÜV SV 96.894 & VERITAS (offshore & marine) certifications - Min. setting pressure : 0,5 bar.



Inlet DN	Outlet DN	Max. setting pressure (bar)	closed bonnet code	open bonnet code	price €
20	32	40	250520	250820	843,12
25	40	40	250525	250825	867,24
32	50	40	250532	250832	1 060,74
40	65	32	250540	250840	1 217,34
50	80	32	250550	250850	1 372,04
65	100	32	250565	250865	1 887,14
80	125	25	250580	250880	2 420,34
100	150	20	250590	250890	3 382,12
125	200	12,5	250591	250891	6 794,00
150	250	10	250592	250892	10 192,60

Mandatory certificate 14 €/pc included in price

█ : not on stock, on request.

Threaded



ISO
9001



3.1

10 €/DN

2800 - Free outlet brass safety valve

Brass CW614N body - FKM gasket - Temperature range: -10°C/+160°C - BSP threaded - Testing device - 97/23 CE 0035 certification - Min. setting pressure: 0,3 bar - Standard settings 0,5 to 12 bar (every 0,5 bar): on stock.

Compressed air



Inlet DN	Ref.	Max. setting pressure (bar)	code	price €
1/4"	D7	60	28000	24,00
3/8"	D10	60	28001	35,80
1/2"	D10	60	28002	35,80
3/4"	D14	30	28003	52,00
1"	F18	21	28004	104,00
1"1/4	F25	30	28005	214,00
1"1/2	F32	14	28006	216,00
2"	F40	30	28007	416,00

Mandatory certificate 5 €/pc included in price

Compressed air



2812 - Free outlet stainless steel safety valve

Forged stainless steel 1.4401 body - NBR gasket - Temperature range: -10°C/+100°C - BSP threaded - Testing device - 97/23 CE 0035 certification - Min. setting pressure: 0,3 bar - Standard settings 0,5 to 12 bar (every 0,5 bar).

Inlet DN	Ref.	Max. setting pressure (bar)	code	price €
1/4"	D7	60	28120	144,00
3/8"	D10	60	28121	164,00
1/2"	D10	60	28122	164,00
3/4"	D14	30	28123	280,00
1"	B20	60	28124	392,00
1"1/4	F25	30	28125	528,00
1"1/2	F32	14	28126	528,00
2"	F40	30	28127	840,00

Mandatory certificate 5 €/pc included in price

2871 - Piped outlet brass safety valve

Brass CW614N body - FKM gasket - Temperature range: -20°C/+160°C - BSP threaded - Testing device - 97/23 CE 0035 certification - Min. setting pressure: 0,3 bar - Standard settings 0,5 to 12 bar (every 0,5 bar): on stock - Gas application on request.

Liquids



Inlet DN	Outlet DN	Ref.	Max. setting pressure (bar)	code	price €
3/8"	3/4"	D10/C	60	28711	56,00
1/2"	3/4"	D10/C	60	28712	56,00
3/4"	1"	G14	60	28713	102,00
1"	1"	G14	60	28714	126,00
1"1/4	1"1/4	G20	60	28715	189,80
1"1/2	1"1/2	G25	40	28716	304,00
2"	1"1/2	G32	14	28717	344,00

Mandatory certificate 5 €/pc included in price

2851/2858 - Piped outlet brass safety valve with lever

Brass CW614N body - BSP threaded - Testing lever - 97/23 CE 0035 certifications - Min. setting pressure: 0,3 bar - Standard settings 0,5 to 15 bar (every 0,5 bar): on stock.

Steam



Inlet DN	Outlet DN	Ref.	Max. setting pressure (bar)	up to 6 bar		up to 15 bar	
				code	price €	code	price €
1/2"	1"	G10/L	30	28512	124,00	28582	134,00
3/4"	1"	G14/L	60	28513	139,80	28583	156,00
1"	1"1/4	G20/L	60	28514	220,00	28584	262,00
1"1/4	1"1/4	G25/L	60	28515	220,00	28585	262,00
1"1/2	1"1/2	G40/L	60	28516	360,00	28586	466,00
2"	2"	G40/L	14	28517	908,00	28587	1 050,00

Mandatory certificate 5 €/pc included in price

FKM + PTFE seat 165°C saturated steam
KALREZ seat 200°C saturated steam

2885 - Piped outlet stainless steel safety valve

Forged stainless steel 1.4401 body - PTFE gasket - Temperature range: -100°C/+200°C - BSP threaded - Testing device - 97/23 CE 0035 certification - Min. setting pressure: 0,5 bar - Standard settings 0,5 to 12 bar (every 0,5 bar): on stock - Gas application on request.

Process



Inlet DN	Outlet DN	Ref.	Max. setting pressure (bar)	code	price €
3/8"	3/4"	D10/C	60	28851	250,00
1/2"	3/4"	D10/C	60	28852	254,00
3/4"	1"	G14	60	28853	344,00
1"	1"	G14	60	28854	368,00

Mandatory certificate 5 €/pc included in price

2863 - Piped outlet stainless steel safety valve with lever

Forged stainless steel 1.4401 body - PTFE gasket - BSP threaded - Testing lever - 97/23 CE 0035 certification - 10 bar at 180°C saturated steam - Min. setting pressure: 0,3 bar - Standard settings 0,5 to 15 bar (every 0,5 bar).

Clean steam



Inlet DN	Outlet DN	Ref.	Max. setting pressure (bar)	up to 10 bar	
				code	price €
1/2"	1"	G10/L	30	28632	384,00
3/4"	1"	G14/L	60	28633	418,00
1"	1"1/4	G20/L	60	28634	660,00
1"1/4	1"1/4	G25/L	60	28635	660,00
1"1/2	1"1/2	G40/L	60	28636	810,00
2"	2"	G40/L	14	28637	1 546,00

Mandatory certificate 5 €/pc included in price

: not on stock, on request.

Overflow valves

Products excluded from CE directive risk category IV - Pre-set pressure: 10 €/pc.



619 E - Bronze overflow valve - NBR seat

Bronze CC491K body - Max. pressure: 20 bar - Temperature range: -10°C/+130°C - Proportional opening - Opening start adjustable pressure - Tight bonnet (except during initial setting) - BSP threaded.



Inlet DN	0,2 - 0,8 bar			0,5 - 2,5 bar			2 - 12 bar		
	code	code	code	code	code	code	code	code	price €
3/8"	289611	289621	289631	289611	289621	289631	289611	289621	117,20
1/2"	289612	289622	289632	289612	289622	289632	289612	289622	117,20
3/4"	289613	289623	289633	289613	289623	289633	289613	289623	138,54
1"	289614	289624	289634	289614	289624	289634	289614	289624	182,86
1" 1/4	289615	289625	289635	289615	289625	289635	289615	289625	251,56
1" 1/2	289616	289626	289636	289616	289626	289636	289616	289626	374,64
2"	289617	289627	289637	289617	289627	289637	289617	289627	549,76

618 T - Bronze overflow valve - PTFE seat

Same as 619 E, except temperature range: -40°C/+180°C.

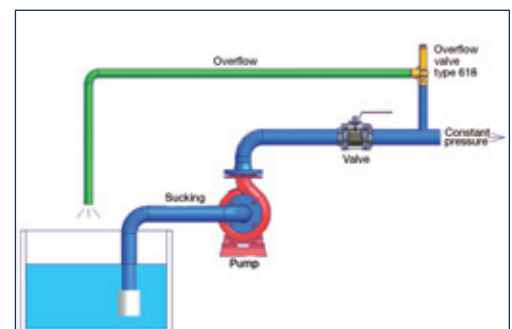
Inlet DN	0,5 - 2,5 bar			2 - 12 bar			12 - 20 bar		
	code	code	code	code	code	code	code	code	price €
3/8"	289521	289531	289541	289521	289531	289541	289521	289531	113,56
1/2"	289522	289532	289542	289522	289532	289542	289522	289532	113,56
3/4"	289523	289533	289543	289523	289533	289543	289523	289533	138,54
1"	289524	289534	289544	289524	289534	289544	289524	289534	182,86
1" 1/4	289525	289535	289545	289525	289535	289545	289525	289535	255,54
1" 1/2	289526	289536	289546	289526	289536	289546	289526	289536	374,64
2"	289527	289537	289547	289527	289537	289547	289527	289537	549,76

418 F - Stainless steel overflow valve

Stainless steel 1.4408 body - FKM seat - Max. pressure: 30 bar - Temperature range: -10°C/+200°C - Opening start adjustable pressure - Tight bonnet - BSP threaded.



DN	1,2 - 3 bar		2 - 12 bar	
	code	code	code	price €
3/8"	289821	289831	289821	555,56
1/2"	289822	289832	289822	561,20
3/4"	289823	289833	289823	581,66
1"	289824	289834	289824	676,44
1"1/4	289825	289835	289825	800,76



Overflow valves (continued)

2480/2490 - Stainless steel overflow valve

Stainless steel -1.4408 body - FKM seat - Max. pressure: 16 bar - Temperature range: -15°C/+100°C - BSP threaded or flanged PN16 - Supplied with a stainless steel pressure gauge indicating the upstream pressure - Horizontal mounting only.



BPV - BSP threaded



DN	Face to face (mm)	Weight (kg)	Upstream pressure range		price €
			1-5 bar code	4-10 bar code	
1/2"	70	0,80	248001	248002	340,00
3/4"	85	1,00	248011	248012	350,00
1"	92	1,05	248021	248022	372,00
1 1/2"	115	2,30	248031	248032	630,00
2"	120	2,50	248041	248042	658,00

BPV - Flanged PN16



DN	Face to face (mm)	Weight (kg)	Upstream pressure range		price €
			1-5 bar code		
15	150	2	249001		516,00
20	150	3	249011		544,00
25	150	5	249021		598,00
40	190	8	249031		864,00
50	190	12	249041		914,00
65	210	16	249051		2 280,00
80	225	18	249061		2 448,00
100	250	25	249071		2 986,00

2470 BFS - Coaxial cast iron flanged overflow valve

Cast iron body, epoxy covered - Brass & bronze inner parts - NBR tightness - Max. pressure: 16 bar - Temperature range: -10°C/+80°C - Upstream pressure adjustable with screw - Supplied with manometer - Flanged PN16 raised faces - For clear water - Horizontal mounting preferred - Concerned by CE directive, article 3§3 - Not for gas of group 1.



DN	Kv (m³/h)	Face to face (mm)	Weight (kg)	Upstream pressure range		price €
				0, 2-4 bar code	3-10 bar code	
50	65	190	12	2470050	2471050	490,34
65	91	210	15	2470065	2471065	674,34
80	121	225	18	2470080	2471080	824,96
100	225	250	24	2470100	2471100	1 117,14
125	337	280	32	2470125	2471125	1 692,60
150	476	310	44	2470150	2471150	2 242,86
200	865	420	87	2470200	2471200	5 790,04
250	1387	470	152	2470250	2471250	11 939,34
300	1903	530	202	2470300	2471300	16 122,76

■ : not on stock, on request.

Pressure reducing valves



Brass

With manometer outlets - Max. upstream pressure 25 bar - Downstream adjustable pressure 1 to 6 bar - Pre-set pressure 3 bar.

Female - Female



Ø	Face to face (mm)	code	price €
1/2"	76	RPTH15H	21,30
3/4"	76	RPTH20H	21,40
1"	91	RPTH26H	34,10
1 1/4"	113	RPTH33H	67,40
* 1 1/2"	170	RPTH40H	101,00
* 2"	195	RPTH50H	151,80

* supplied with union fittings.

Male union fittings



Ø	Face to face with fittings (mm)	code	price €
1/2"	138	RPTH15HM	22,60
3/4"	138	RPTH20HM	24,91
1"	136	RPTH26HM	46,60

Bronze

681 - Threaded

Bronze CC491K body - NBR tightness - Stainless steel strainer - Max. pressure: 25 bar - Max. temperature: 95°C - Stainless steel seat up to 1 1/4", bronze seat above - Downstream setting range: 1 to 7 bar - Supplied with manometer - Concerned by CE directive, article 3 § 3 - Not for gas of group 1.



DN	Face to face (mm)	Face to face with fittings (mm)	Weight (kg)	code	price €
1/2"	75	135	0,80	R68115	64,23
3/4"	92	160	1,30	R68120	71,91
1"	98	178	1,70	R68126	87,63
1 1/4"	128	226	1,90	R68133	113,86
1 1/2"	128	226	3,60	R68140	246,69
2"	148	260	6,70	R68150	303,71

682 - Flanged PN16

Same as 681, except: max. pressure 16 bar & flanged PN16.



DN	Face to face (mm)	Weight (kg)	Max. flow (m³/h)	code	price €
50	230	10,5	27	246827	978,00
65	290	20	60	246828	1 342,64
80	310	22	68	246829	1 747,06



Cast iron



ISO
9001

2420 BFR - Coaxial

Cast iron body, epoxy covered - Brass & bronze inner parts - NBR tightness - Max. pressure: 16 bar - Temperature range: -10°C/+80°C - Downstream pressure adjustable with screw - Supplied with manometer - Flanged PN16 raised faces.



DN	Kv (m³/h)	Face to face (mm)	Weight (kg)	Downstream pressure range		price €
				1-7 bar code	4-12 bar code	
50	65	190	12	2420050SE	2421050SE	494,34
65	91	210	15	2420065SE	2421065SE	674,34
80	121	225	18	2420080SE	2421080SE	824,96
100	225	250	24	2420100SE	2421100SE	1 117,14
125	337	280	32	2420125	2421125	1 692,60
150	476	310	44	2420150	2421150	2 242,86
200	865	420	87	2420200	2421200	5 790,04
250	1387	470	152	2420250	2421250	11 939,34
300	1903	530	202	2420300	2421300	16 122,76

: not on stock, on request.

Stainless steel



ISO
9001

3.1

10 €/DN

2430 - LPRV - Low pressure

Stainless steel CF8M-1.4408 body - FKM seat - Max. pressure: 10 bar - Temperature range: -15°C/+80°C - BSP threaded - Supplied with a stainless steel pressure gauge indicating the downstream pressure.



DN	Face to face (mm)	Weight (kg)	Downstream pressure range		price €
			0,2-1,5 bar code		
1/2"	105	0,80	243001		518,84
3/4"	105	1,00	243011		502,58
1"	105	1,05	243021		574,10
1 1/2"	145	2,30	243031		934,40
2"	145	2,50	243041		994,80



DN	Face to face (mm)	Weight (kg)	Downstream pressure range		price €
			0,2-1,5 bar code		
15	150	2,5	243301		723,85
20	150	3,5	243311		759,85
25	150	5,6	243321		800,76
40	190	8,7	243331		1 166,80
50	190	13,5	243341		1 231,05

2440 - PRV

Stainless steel CF8M-1.4408 body - FKM seat - Max. pressure: 16 bar - Temperature range: -15°C/+100°C - Supplied with a stainless steel pressure gauge indicating the downstream pressure.



DN	Face to face (mm)	Weight (kg)	Downstream pressure range			price €
			1-6 bar code	4-10 bar code	8-13 bar code	
1/2"	70	0,80	244001	244002	244003	326,96
3/4"	85	1,00	244011	244012	244013	342,78
1"	92	1,05	244021	244022	244023	380,44
1 1/2"	115	2,30	244031	244032	244033	649,08
2"	120	2,50	244041	244042	244043	725,64



DN	Face to face (mm)	Weight (kg)	Downstream pressure range		price €
			1-6 bar code	4-10 bar code	
15	150	2	245001	-	558,00
20	150	3	245011	-	580,00
25	150	5	245021	-	598,00
40	190	8	245031	-	890,00
50	190	12	245041	245042	998,00
65	210	16	245051	245052	2 300,00
80	225	18	245061	245062	2 410,00
100	250	25	245071	245072	2 998,00

PRU 100 - High pressure - 1/4" NPT

For gas and liquids - Max. upstream pressure: 3500 psi / 240 bar - Stainless steel 316 body - VESPEL gasket - Temperature range: -40°C/+175°C - Flow coef. Kv = 0,051 - Includes upstream and downstream pressure manometers.



DN	Downstream pressure	code	price €
1/4" NPT	1 - 50 psi 0,07 - 3,4 bar	2420001	390,00
1/4" NPT	3 - 250 psi 0,2 - 17 bar	2420002	390,00
1/4" NPT	5 - 500 psi 0,35 - 34 bar	2420003	390,00

PRU 200 - High pressure - 1/2" NPT

Same as PRU 100, except: flow coef. Kv = 0,85.



DN	Downstream pressure	code	price €
1/2" NPT	3 - 250 psi 0,2 - 17 bar	2420012	590,00
1/2" NPT	5 - 500 psi 0,35 - 34 bar	2420013	590,00

Gas equipment



M16/RM - Solenoid valve with manual resetting 500 mbar & 6 bar

Gas flow shut-off in case of lack of current - Used with natural gas & lpg - Manual reset - Normally closed (opening with electric supply) - Aluminium body (except brass body for 1/2" to 1" for working pressure 6 bar) - Temperature range: -20°C/+60°C - Built-in filter cartridge 50 µm for DN65 to 200 - IP 65 coil - Horizontal mounting solenoid coil on the top - Closing time < 1 s - Built-in short anti-disconnection device - BSP threaded and flanged PN16 - ATEX cat. II 3G, II 3D for zones 2 & 22.



Working pressure 500 mbar

Working pressure 6 bar

DN	Face to face (mm)	230V AC		24V AC		price €	230V AC		24V AC		price €
		Power VA	code	Power VA	code		Power VA	code	Power VA	code	
1/2"	66	9	092802M	8	092812M	82,36	9	092102M	8	092122M	96,36
3/4"	66	9	092803M	8	092813M	82,36	9	092103M	8	092123M	96,36
1"	82	9	092804M	8	092814M	100,38	9	092104M	8	092124M	117,48
1 1/4"	120	9	092805M	8	092815M	148,02	9	092105M	8	092125M	223,08
1 1/2"	160	9	092806M	8	092816M	148,02	9	092106M	8	092126M	223,08
2"	160	9	092807M	8	092817M	220,08	9	092107M	8	092127M	295,68
65	290	18	092903M	20	092913M	444,02	18	092109M	20	092129M	604,56
80	310	18	092904M	20	092914M	559,86	18	092110M	20	092130M	741,84
100	350	18	092905M	20	092915M	918,92	18	092111M	20	092131M	1 250,04
125	480	18	092906M	20	092916M	1 606,18	18	092112M	20	092132M	2 187,24
150	480	18	092907M	20	092917M	1 606,18	18	092113M	20	092133M	2 187,24
200	600	18	092908M	20	092918M	4 559,86					

EVP - Solenoid valve 360 mbar

Used with natural gas & lpg - Automatic reset - Normally closed (opening with electric supply) - Aluminium body - Max. pressure: 360 mbar - Temperature range: -20°C/+60°C - Built-in filter cartridge 50 µm for DN65 to 100 - Closing time < 1 s - BSP threaded and flanged PN16 - ATEX cat. II 3G, II 3D for zones 2 & 22.



DN	Face to face (mm)	230V AC		24V AC		price €
		Power VA	code	Power VA	code	
1/2"	70	22	092402M	24	092412M	81,10
3/4"	70	22	092403M	24	092413M	104,26
1"	90	18	092404M	20	092414M	120,16
1 1/4"	160	46	092405M	47	092415M	253,00
1 1/2"	160	46	092406M	47	092416M	223,94
2"	160	46	092407M	47	092417M	266,42
65	290	95	092303M	88	092313M	675,68
80	310	95	092304M	98	092314M	722,02
100	350	115	092305M	107	092315M	1 335,90



Micro cut-off anti-disconnection device

Used for 230V DC solenoid coil up to 50W - Protection 1 to 3 s depending on power.

code	price €
045006	182,44

EV-6 - Solenoid valve 6 bar

According to CE 97/23 CE 2009/142 - Normally closed - Aluminium body - 230V AC - For methane, natural gas, lpg - Max. pressure: 6 bar - Temperature range: -15°C/+60°C - Closing time < 1 s - IP65 coil - ATEX cat. II 3 G/D for zones 2 & 22 - BSP threaded & flanged PN16.



NEW

DN	Face to face (mm)	code	price €
1/2"	70	092502M	186,37
3/4"	70	092503M	186,37
1"	70	092504M	186,37
1 1/4"	160	092505M	553,67
1 1/2"	160	092506M	553,67
2"	160	092507M	540,37
65	290	092508M	1 372,87
80	310	092509M	1 448,33
100	350	092510M	2 258,67



PGRF - Pressure switch

Aluminium body - Max. pressure: 690 mbar - Temperature range: 0°C/+85°C - Transparent plastic cover IP54 - Setting knob - Switch-off power 250V AC / 6A - 1/4" BSP threaded - Electric switch T30 (not supplied).

Type	Max. Δp (mbar)	code	price €
5-150 mbar	≤ 5	436002	41,60
100-500 mbar	≤ 15	436003	47,30
Electric switch T30	-	980700	2,80

FRG 2MC - Pressure reducing valve with built-in filter - 1 bar

CE 90/396 according to EN 88² - Reduces the network gas pressure to the burner one - Aluminium body - Upstream built-in filter 50 µm - Max. upstream pressure: 1 bar - Temperature range: -15°C/+60°C - Built-in pressure connections - BSP threaded - ATEX cat. II 2G, II 2D for zones 1, 2, 21 & 22.



DN	Face to face (mm)	Max. flow (Nm ³ /h)	Downstream pressure setting range (mbar)										price €
			range	code	range	code	range	code	range	code	range	code	
1/2"	120	19	9-28	094004M	18-40	094014M	40-110	094024M	110-150	094034M	150-200	094044M	57,92
3/4"	120	34	9-28	094005M	18-40	094015M	40-110	094025M	110-150	094035M	150-200	094045M	57,92
1"	120	53	9-28	094006M	18-40	094016M	40-110	094026M	110-150	094036M	150-200	094046M	57,92
1 1/4"	160	87	13-23	094007M	20-36	094017M	55-100	094027M	90-190	094037M	-	-	135,14
1 1/2"	160	136	13-23	094008M	20-36	094018M	55-100	094028M	90-190	094038M	-	-	135,14
2"	160	212	13-23	094009M	20-36	094019M	55-100	094029M	90-190	094039M	-	-	223,94

FRG 2MCS - Pressure reducing valve with built-in filter - 5 bar

CE 90/396 according to EN 88-2 - CE 97/23 - Reduced the network gas pressure to the burner one - Shut-off in case of upstream over-pressure or pressure drop - Air vent - Aluminium body - Upstream built-in filter 50 µm - Max. upstream pressure: 5 bar - Temperature range: -20°C/+60°C - Built-in pressure connections - BSP threaded - ATEX cat. II 2G/D for zones 1, 2, 21 & 22.



DN	Face to face (mm)	Max. flow (Nm ³ /h)	Downstream pressure setting range (mbar)	code	price €
1/2"	120	90	20-30	094104M	118,00
3/4"	120	90	20-30	094105M	118,00
1"	120	90	20-30	094106M	118,00

FM - Gas filter

CE according to EN 126 - impurities filtering - 50 µm filtering for 1/2" to DN100, 10 µm above - Aluminium body - Upstream pressure connection - BSP threaded and flanged PN16 - Max. pressure: 2 bar or 6 bar - Temperature range: -15°C/+70°C.



DN	Face to face (mm)	Max. pressure 2 bar		Max. pressure 6 bar	
		code	price €	code	price €
1/2"	120	095004M	24,46	095104M	27,72
3/4"	120	095005M	24,46	095105M	27,72
1"	120	095006M	24,46	095106M	27,72
1 1/4"	160	095007M	39,90	095107M	48,84
1 1/2"	160	095008M	39,90	095108M	48,84
2"	160	095009M	54,06	095109M	66,00
65	290	095506M	258,70	095516M	332,64
80	310	095507M	293,44	095517M	374,88
100	350	095508M	486,48	095518M	641,52
125	480	095509M	1 084,96	095519M	1 411,08
150	480	095510M	1 265,78	095520M	1 411,08

Solenoid valves and filters for BIOGAS or request

Manometers

With cap for gas - Dry stainless steel box.

Ø 63 - Radial - Class 2,5



Pressure (mbar)	Ø connection	code	price €
0 - 60	1/4"	1633001	61,00
0 - 100	1/4"	1633002	61,00
0 - 250	1/4"	1633003	61,00
0 - 400	1/4"	1633004	61,00
0 - 600	1/4"	1633005	61,00

Ø 100 - Radial - Class 1,6



Pressure (mbar)	Ø connection	code	price €
0 - 60	1/2"	1635001	79,00
0 - 100	1/2"	1635002	79,00
0 - 250	1/2"	1635003	79,00
0 - 400	1/2"	1635004	79,00
0 - 600	1/2"	1635005	79,00



Brass ball valves & y-strainers, see pages 182 & 186



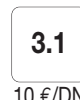
Butterfly valves, see pages 20 & 22



Actuated valves, see pages 51 & 64

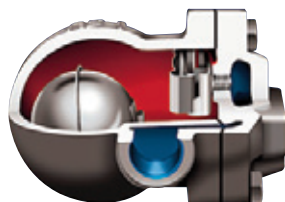
Steam equipment

Steam traps



SK 51 - Ductile iron float steam trap - PN16

Ductile iron GGG40.3 body - Stainless steel mechanism - Max. temperature: 250°C - Max. pressure: 16 bar - Built-in thermostatic air eliminator - Horizontal mounting on stock - Vertical mounting on request (9 € additional).



BSP threaded

DN	Face to face (mm)	Δp 4,5	Δp 10	Δp 14	price €
		code	code	code	
1/2"	122	151040	151041	151042	138,00
3/4"	122	151050	151051	151052	138,00
1"	145	151060	151061	151062	202,00



Flanged PN16

DN	Face to face (mm)	Δp 4,5	Δp 10	Δp 14	price €
		code	code	code	
15	150	150915	150916	150917	168,00
20	150	150920	150921	150922	171,20
25	160	150925	150926	150927	244,00

SK 55 - Ductile iron float steam trap - PN16 - With tempered sight glass

Ductile iron GGG40.3 body - Stainless steel mechanism - Max. temperature: 250°C - Max. pressure: 16 bar - Built-in thermostatic air eliminator - Borosilicate sight glass - Horizontal mounting on stock - Vertical mounting on request (9 € additional).



DN	Face to face (mm)	Δp 4,5	Δp 10	Δp 14	price €
		code	code	code	
32	230	151840	151841	151842	680,00
40	230	151850	151851	151852	680,00
50	230	151860	151861	151862	808,00

SK 70 - Carbon steel steam trap - PN25

Carbon steel 1.0619 body - Stainless steel mechanism - Max. temperature: 400°C - Max. pressure: 25 bar - Built-in thermostatic air eliminator - Horizontal mounting on stock - Vertical mounting on request (9 € additional).



BSP threaded

DN	Face to face (mm)	Δp 4,5	Δp 10	Δp 14	price €
		code	code	code	
1/2"	122	151460SE	151461	151462	168,00
3/4"	122	151465	151466	151467	172,00
1"	145	151470SE	151471	151472	199,40



Flanged PN25

DN	Face to face (mm)	Δp 4,5	Δp 10	Δp 14	price €
		code	code	code	
15	150	151480SE	151481	151482	190,00
20	150	151485SE	151486	151487	196,80
25	160	151490SE	151491	151492	280,00

SK 61 - Stainless steel float steam trap - PN25

Stainless steel CF8M-1.4408 body - Stainless steel mechanism - Max. temperature: 250°C - Max. pressure: 25 bar - Built-in air eliminator - Horizontal mounting in stock - Vertical mounting on request (9 € additional).



BSP threaded

DN	Face to face (mm)	Δp 4,5	Δp 10	Δp 14	price €
		code	code	code	
1/2"	122	151315	151316	151317	350,00
3/4"	122	151320	151321	151322	350,00
1"	145	151325	151326	151327	540,00

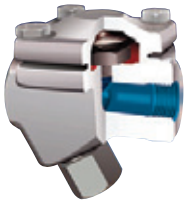


Flanged PN25

DN	Face to face (mm)	Δp 4,5	Δp 10	Δp 14	price €
		code	code	code	
15	150	151332	151333	151334	466,00
20	150	151340	151341	151342	476,00
25	160	151350	151351	151352	788,00

TKK 2Y - Carbon steel thermostatic steam trap - PN40

Forged carbon steel A105-1.0460 body - Stainless steel mechanism - Built-in y-strainer - Thermostatic capsule in hastelloy and stainless steel - Max. temperature: 250°C - Max. pressure: 33 bar - Horizontal mounting.



BSP threaded

DN	Face to face (mm)	code	price €
1/2"	95	151504	151,00
3/4"	95	151505	151,00
1"	95	151506	151,00

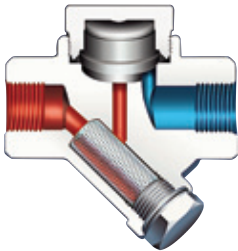


Flanged PN40

DN	Face to face (mm)	code	price €
15	150	151615	186,00
20	150	151620	186,00
25	160	151625	186,00

TDK 45 - Carbon steel thermodynamic steam trap - PN40

Forged carbon steel A105-1.0460 body - Stainless steel mechanism - Built-in y-strainer - Max. temperature: 400°C - Max. pressure: 32 bar - Downstream max. back pressure: 80% of the upstream pressure - Horizontal mounting.



BSP threaded

DN	Face to face (mm)	code	price €
1/2"	95	153004	77,00
3/4"	95	153005	84,50
1"	95	153006	113,40



Flanged PN40

DN	Face to face (mm)	code	price €
15	150	153115	164,80
20	150	153120	164,80
25	160	153125	164,80

TDK 71 - Stainless steel thermodynamic steam trap - PN63

Stainless steel 1.4028 body - Built-in y-strainer - Max. temperature: 400°C - Max. pressure: 42 bar - Downstream max. back pressure: 80% of the upstream pressure - Horizontal mounting.



BSP threaded

DN	Face to face (mm)	code	price €
1/2"	78	153304	99,20
3/4"	90	153305	102,20
1"	95	153306	143,00

TK 1 - Carbon steel bi-metallic steam trap - PN40

Forged carbon steel A105-1.0460 body - Stainless steel mechanism - Use: max. differential pressure 22 bar - Built-in strainer and check valve - Max. temperature: 250°C - Max. pressure: 32 bar - Possible adjustment of discharge capacity and condensate temperature - Installation: all positions.



BSP threaded

DN	Face to face (mm)	code	price €
1/2"	95	153604	210,00
3/4"	95	153605	210,00
1"	95	153606	210,00



Flanged PN40

DN	Face to face (mm)	code	price €
15	150	154015	250,00
20	150	154020	250,00
25	160	154025	250,00

Pressure reducing valves



3.1
10 €/DN



BDV 25 - Ductile iron pressure reducing valve

For compressible fluids: air, gas, steam - Ductile iron GGG40.3 body PN25 - Stainless steel mechanism - Built-in strainer - Max. upstream pressure: 17 bar - Max. temperature: 210°C - BSP threaded - Locking device - Horizontal mounting.

BSP threaded

DN	Face to face (mm)	Downstream pressure range			price €
		0,14 - 1,7 bar	1,4 - 4 bar	3,5 - 8,6 bar	
1/2"	85	158041A	158042A	158043A	260,26
3/4"	98	158051A	158052A	158053A	295,44
1"	110	158061A	158062A	158063A	361,32



PRV-S - Stainless steel pressure reducing valve

Stainless steel CF8M-1.4408 body - FKM/PTFE tightness - Max. pressure: 12 bar - Max. temperature: 192°C - Supplied with Ø 63 dry manometer indicating the downstream pressure.

BSP threaded

DN	Face to face (mm)	Weight (kg)	Downstream pressure range		price €
			1-6 bar	4-10 bar	
1/2"	70	0,80	158101	158102	284,00
3/4"	85	1,00	158111	158112	296,00
1"	92	1,05	158121	158122	318,00



Flanged

DN	Face to face (mm)	Weight (kg)	Downstream pressure range		price €
			1-6 bar	4-10 bar	
15	150	2	158301	158302	480,00
20	150	3	158311	158312	490,00
25	150	5	158321	158322	544,00

DRP 16 - Ductile iron flanged pressure reducing valves - Flanged PN16

Ductile iron body - Steam: max. temperature 200°C / max. upstream pressure 13 bar - ΔP max.: 10 bar - Inner mechanism: stainless steel - Upstream y-strainer & condensation tank to be added.



ISO 9002



DN	Face to face (mm)	Kv	Downstream pressure range									
			0,2 - 1,5 bar		1 - 4 bar		1,2 - 6 bar Actuator		1 - 10 bar		8 - 20 bar	
			D1	D4	D8	D10	D20					
15	150	3	308615015	1 847,76	308615040	1 932,86	308615060	1 294,40	308615100	1 686,18	308615200	1 839,30
20	150	5,5	308620015	2 247,72	308620040	1 979,64	308620060	1 450,92	308620100	1 716,56	308620200	1 886,10
25	160	10	308625015	2 465,82	308625040	1 998,70	308625060	1 639,14	308625100	1 913,90	308625200	2 100,50
32	180	14	308632015	2 480,00	308632040	2 291,60	308632060	1 762,10	308632100	2 033,16	308632200	2 198,06
40	200	17,5	308640015	2 480,00	308640040	2 294,00	308640060	2 039,10	308640100	2 354,12	308640200	2 307,20
50	230	29	308650015	2 814,76	308650040	2 309,94	308650060	2 181,36	308650100	2 450,50	308650200	2 443,66
65	290	48	308665015	3 592,06	308665040	2 852,98	308665060	2 894,22	308665100	3 667,20	308665200	3 266,46
80	310	72	308680015	4 227,66	-	-	-	-	* 308680100	3 784,80	308680200	3 902,06
100	350	107	308691015	4 622,18	-	-	-	-	* 308691100	4 111,20	308691200	4 873,04

* Pressure range: 2-10 bar.

DRP 40 - Carbon steel flanged pressure reducing valve - Flanged PN40

Carbon steel body - Steam: max. temperature 215°C / max. pressure 20 bar - ΔP max.: 10 bar - Inner mechanism: stainless steel - Upstream y-strainer & condensation tank to be added.

DN	Face to face (mm)	Kv	Downstream pressure range									
			0,2 - 1,5 bar		1 - 4 bar		1,2 - 6 bar Actuator		1 - 10 bar		8 - 20 bar	
			D1	D4	D8	D10	D20					
15	150	3	308715015	2 708,84	308715040	2 572,34	308715060	2 103,66	308715100	2 456,58	308715200	2 478,80
20	150	5,5	308720015	2 888,22	308720040	2 574,00	308720060	2 104,00	308720100	2 559,04	308720200	2 478,80
25	160	10	308725015	2 973,96	308725040	2 742,00	308725060	2 384,46	308725100	2 580,00	308725200	2 560,00
32	180	14	308732015	3 209,90	308732040	2 977,94	308732060	2 390,00	308732100	2 580,00	308732200	2 884,30
40	200	17,5	308740015	3 478,98	308740040	3 246,96	308740060	2 624,86	308740100	3 151,08	308740200	3 153,38
50	230	29	308750015	3 720,74	308750040	3 488,74	308750060	3 442,74	308750100	3 386,90	308750200	3 395,14
65	290	48	308765015	4 781,38	308765040	4 549,38	308765060	3 700,30	308765100	4 448,96	308765200	4 455,78
80	310	72	308780015	6 089,70	-	-	-	-	* 308780100	5 754,40	308780200	5 764,10
100	350	107	308791015	8 025,76	-	-	-	-	* 308791100	5 847,78	308791200	7 700,16

* Pressure range: 2-10 bar.

Condensation tank

Actuator	code	price €
D6 - D8 - D10 - D20	30980101	264,00
D1 - D4	30980102	370,00

Separators



3.1
10 €/DN



SPR 40 - Carbon steel separator - PN40

Carbon steel body (AD Merkblatt 2000) - Flanged PN40 - Suitable for steam and compressed air - CE 97/23 - 32 bar / 250°C for steam; 40 bar / 20°C for compressed air.

DN	Face to face (mm)	CE category	Volume (l)	Ø event	Ø drainer	code	price €
15	180	I	1,5	1/2"	1/2"	1560A015	411,54
20	230	I	2,9	1"	1/2"	1560A020	450,12
25	230	I	3,1	1"	1/2"	1560A025	514,30
32	250	II	5,2	1"	1/2"	1560A032	610,16
40	300	II	8,9	1"	1/2"	1560A040	627,44
50	310	II	9,7	1"	1/2"	1560A050	836,58
65	400	II	19,4	1"1/2	3/4"	1560A065	1 070,00
80	450	III	34,3	1"1/2	3/4"	1560A080	1 355,10
100	500	III	57,8	2"	1"	1560A100	1 714,30



SPR 25 - Stainless steel separator - PN25

Stainless steel 304 - For steam and compressed air - CE 97/23 - Max. pressure: 25 bar - Max. temperature: 228°C - BSP threaded.

DN	Face to face (mm)	CE category	Ø event	Ø drainer	code	price €
1/2"	120	A3 § 3	1/2"	1/2"	1560002	732,80
3/4"	150	I	1/2"	1/2"	1560003	1 029,44
1"	160	I	1/2"	1/2"	1560004	1 388,84

VK - Vacuum breakers

Brass PN16 -
Max. temperature: 260°C.



DN	code	price €
1/2"	981405	58,12

Stainless steel PN40 -
Max. temperature: 300°C.



DN	code	price €
1/2"	981400	79,20

Manometer Ø 100 - Radial

Stainless steel box -
Max. temperature: 180°C - Class 1,6.



Pressure (bar)	Ø connection	code	price €
0 - 10	1/2"	981703	74,60
0 - 25	1/2"	981705	74,60



Coil siphon

DIN 16282 C type - Max. temperature: 300°C (at 80 bar) - Ø connection M1/2" x F1/2".

	code	price €
Carbon steel	981712	50,20
Stainless steel	981713	187,00



Valve

DIN 16270 A type - Carbon steel - PN400 - Max. temperature: 200°C - Ø connection 1/2".

	code	price €
Carbon steel	981710	46,60
Stainless steel	981717	154,40

Air vents

Cast iron

BSP threaded - Max. pressure: 10 bar -
Max. temperature: 120°C.



DN	code	price €
3/4"	PF20	70,00

Stainless steel

BSP threaded - Max. pressure: 12 bar -
Max. temperature: 200°C - Vertical installation.



DN	code	price €
3/4"	154810	250,00



ISO
9001

Compressed air equipment

Air treatment

ISO
9001

Specifications

Max. pressure: 10 bar for 1/4" & 1/2", 12 bar for 3/4" & 1" -
Temperature range: 0°C/+50°C - Standard filtration: 5 µm -
Regulator accuracy: 0,2 bar - Aluminium body - Polycarbonate
bowl - Bowl protection: reinforced fiberglass nylon.

1700 - UFR + L

Supplied with manometer & bracket.



DN	code	price €
1/4"	170002	54,00
3/8"	170003	54,00
1/2"	170004	54,00
3/4"	170005	116,00
1"	170006	128,00

1720 - Filter regulator UFR

Supplied with manometer & bracket.



DN	code	price €
1/4"	172002	39,80
3/8"	172003	39,80
1/2"	172004	39,80
3/4"	172005	79,80
1"	172006	79,80

1725 - Regulator UR

Supplied with manometer & bracket.



DN	code	price €
1/4"	172502	27,00
3/8"	172503	27,00
1/2"	172504	27,00
3/4"	172505	56,00
1"	172506	67,00

1705 - UF + R + L

Supplied with manometer & bracket.



DN	code	price €
1/4"	170502	66,00
3/8"	170503	66,00
1/2"	170504	66,00
3/4"	170505	172,00
1"	170506	198,00

1721 - Filter UF 40 µm

Supplied with bracket.



DN	code	price €
1/4"	172102	25,00
3/8"	172103	25,00
1/2"	172104	25,00
3/4"	172105	56,00
1"	172106	58,00

1726 - Lubrifier UL

Supplied with bracket.



DN	code	price €
1/4"	172602	27,00
3/8"	172603	27,00
1/2"	172604	27,00
3/4"	172605	54,00
1"	172606	60,80

1727 - Condensate automatic drain with floater AD 940

DN	code	price €
1/2"	172704	41,20



1762 - Regulator R200

With manometer Ø 40.



DN	code	price €
1/4"	176202	15,08

Manometers

■ Dry - Plastic box

Ø 40 - Axial



Pressure (bar)	Ø connection	code	price €
0 - 10	1/8"	1640006	5,90

Ø 50 - Axial



Pressure (bar)	Ø connection	code	price €
0 - 6	1/4"	413006TH	2,20
0 - 10	1/4"	413010	2,20

Ø 50 - Radial



Pressure (bar)	Ø connection	code	price €
0 - 6	1/4"	413106	2,20
0 - 10	1/4"	413110	2,20

■ Glycerine filled - Stainless steel box

Brass connection - Max. temperature: 60°C - Class 1,6 - Polycarbonate glass.

Ø 50 - Axial



Pressure (bar)	Ø connection	code	price €
0 - 2,5	1/4"	413203	5,20
0 - 6	1/4"	413206	5,20
0 - 10	1/4"	413210	5,20

Ø 50 - Radial



Pressure (bar)	Ø connection	code	price €
0 - 6	1/4"	413306	5,20
0 - 10	1/4"	413310	5,20

Ø 63 - Axial



Pressure (bar)	Ø connection	code	price €
0 - 10	1/4"	413410	6,70
0 - 16	1/4"	413416	6,70
0 - 25	1/4"	413425	6,70

Ø 63 - Radial



Pressure (bar)	Ø connection	code	price €
0 - 10	1/4"	413510	6,70
0 - 16	1/4"	413516	6,70
0 - 25	1/4"	413525	6,70

Drain valves



T-DRAIN - Programmable drain

Built-in upstream filter - Opening frequency from 1 to 60 mn - Opening time: 2,4 or 6 s -
 Max. working pressure: 16 bar - Max. working temperature: 65°C - Max. flow condensate: 32 l/h -
 Electric supply 230V AC - Size: 43 x 89 x 90 mm - Face to face: 85 mm - Min. height under tank: 110 mm -
 Supplied with connector - Upstream connection: 1/2" M - Downstream connection: 3/8" M & hose Ø10 -
 Horizontal or vertical positioning - Test function.

Max. flow (m ³ /h)				
Compressor	Dryer	Filter	code	price €
3600	7200	36000	420050	92,80



T10 - Temporised drain for filters

Electric supply 230V AC - PG9 - Max. working pressure: 16 bar -
 Opening frequency: 0,5 to 45 mn - Opening time: 0,5 to 10 s -
 Connection: 1/8" BSP.

code	price €
421010	63,80



T20 - Temporised drain

Electric supply 230V AC - 1 m cable - Max. working pressure: 16 bar -
 Opening frequency: 0,5 to 45 mn - Opening time: 0,5 to 10 s -
 Upstream connection: 1/2" M BSP - Downstream connection: 1/4" F BSP -
 Built-in ball valves - Cleanable upstream filter.

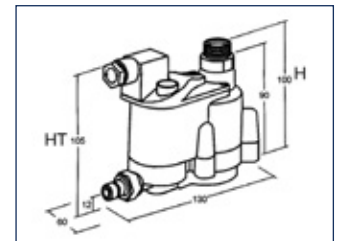
code	price €
421020	99,20



LD100 - Compact capacitive drain

Built-in tank with electronic floater - Built-in filter - Test function -
 Electric supply 230V AC - Connector PG9 - Horizontal positioning -
 Max. working pressure: 16 bar - Max. working temperature: 60°C.

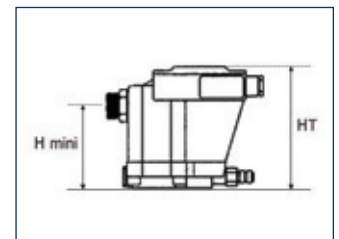
Max. flow (m ³ /h)					Upstream connection	Downstream connection	code	price €
Compressor	Dryer	Filter	HT (mm)	H mini (mm)				
180	180	1800	105	100	1/2"-3/4"M	3/8"	420010	122,40



LOGI-DRAIN - Capacitive drain

Built-in tank with electronic floater - Built-in filter - Electric supplied LED -
 Drain LED - Dysfunction alarm - Test function - Electric supply 230V AC -
 Connector PG9 - Horizontal positioning only - Max. working pressure: 16 bar -
 Max. working temperature: 60°C.

Max. flow (m ³ /h)					Upstream connection	Downstream connection	code	price €	Maintenance set	price €
Compressor	Dryer	Filter	HT (mm)	H mini (mm)						
300	600	3000	118	82	1/2"-3/4"M	3/8"M	420011	234,00	980250	28,00
600	1300	6000	122	102	1/2"-3/4"M	3/8"M	420020	276,00	980251	28,00
1800	3600	18000	170	147	3/4"-3/4"M	3/8"M	420022	370,00	980251	28,00
9500	19000	95000	190	180	2"-3/4"M	3/8"M	420023	588,40	980251	28,00



: not on stock, on request

Instrumentation

Sight glasses



2215 - C 161 - Brass double sight glass with ball
 Brass CB754S body: 1/2" to 1" - Bronze CC491K body:
 1"1/4 to 2" - Max. pressure: 16 bar - Double tempered glass -
 Moplen ball - Temperature range: +5°C/+80°C - BSP threaded.



DN	Face to face (mm)	code	price €
1/2"	95	221504	89,75
3/4"	100	221505	103,45
1"	107	221506	111,48
1"1/4	126	221507	149,26
1"1/2	137	221508	162,62
2"	170	221509	280,55



2211 - C 158 - Brass sight glass with ball
 Brass CB754S body - Max. pressure: 16 bar -
 Tempered glass - Moplen ball - Temperature
 range: +5°C/+80°C - One-way horizontal use
 only - BSP threaded.



DN	Face to face (mm)	code	price €
1/2"	97	221104	66,77
3/4"	100	221105	79,60
1"	103	221106	87,02



2220 - SKT 6 - Cast iron double sight glass
 Cast iron GG20 body - Max. pressure: 16 bar -
 Double tempered glass - Temperature range:
 -10°C/+180°C - BSP threaded.



DN	Face to face (mm)	code	price €
1/2"	75	222004	44,34
3/4"	90	222005	46,00
1"	90	222006	55,02
1"1/4	120	222007	82,18
1"1/2	120	222008	84,00
2"	140	222009	90,12



2225 - C 164 - Cast iron double sight glass
 Cast iron GG25 body with steady internal baffles -
 Max. pressure: 16 bar - Double tempered glass -
 Temperature range: +5°C/+180°C - Flanged PN16.



DN	Face to face (mm)	code	price €
15	130	2225015	93,35
20	150	2225020	99,97
25	160	2225025	108,92
32	180	2225032	132,34
40	200	2225040	139,69
50	230	2225050	164,77
65	290	2225065	285,85
80	310	2225080	313,11
100	350	2225091	527,56



2240 - SKT 9 - Stainless steel sight glass with flapper - BSP threaded
 Stainless steel 1.4408 body and flapper - Max. pressure:
 16 bar - One-way use only - Double tempered glass -
 Temperature range: -10°C/+180°C.



DN	Face to face (mm)	code	price €
1/2"	105	224004	157,42
3/4"	105	224005	165,78
1"	110	224006	191,78
1"1/4	125	224007	272,03
1"1/2	135	224008	272,03
2"	170	224009	328,49



2238 - SKT 9 NPT - Stainless steel sight glass with flapper - NPT threaded
 Same as 2240 - SKT 9, except NPT threaded.



DN	Face to face (mm)	code	price €
1/2"	105	223804	170,35
3/4"	105	223805	197,85
1"	110	223806	211,82
1"1/2	125	223808	335,24
2"	170	223809	398,42



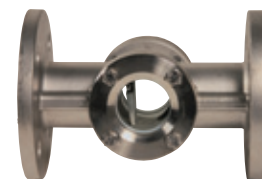
2245 - SKB 2 - Stainless steel sight glass with flapper - Flanged PN16
 Stainless steel 1.4408 body and flapper -
 Max. pressure: 16 bar - One-way use only -
 Double tempered glass - Temperature range:
 -10°C/+180°C.



DN	Face to face (mm)	code	price €
15	130	2245015	241,29
20	150	2245020	309,35
25	160	2245025	314,58
32	180	2245032	404,12
40	200	2245040	436,37
50	230	2245050	562,34
65	290	2245065	687,42
80	310	2245080	787,35
100	350	2245100	1 298,00
125	400	2245101	2 165,02
150	480	2245102	2 878,28



2246 - SKB 2 ANSI - Stainless steel sight glass with flapper - ANSI 150
 Same as 2245 - SKB 2, except ANSI 150.

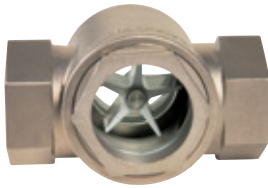


DN	Face to face (mm)	code	price €
15	130	2246015	292,93
20	130	2246020	351,52
25	170	2246025	382,40
40	200	2246040	515,57
50	320	2246050	651,93
80	270	2246080	862,84
100	320	2246100	1 352,85
150	420	2246102	3 281,70



2243 - FW-12 - Stainless steel double sight glass with rotor

Stainless steel 1.4408 body - Max. pressure: 10 bar - Double tempered glass - White ABS rotor - Temperature range: -10°C/+90°C - BSP threaded - CE A3 § 3: not suitable for gas of group 1.



DN	Face to face (mm)	code	price €
1/2"	100	224304	162,46
3/4"	100	224305	198,89
1"	109	224306	210,98
1 1/4"	109	224307	233,20
1 1/2"	150	224308	317,35
2"	150	224309	325,82



2230 - USV - Carbon steel borosilicate sight glass

Forged carbon steel A105-1.0460 body with internal baffle - Max. pressure: 40 bar up to 3/4", 20 bar above - Double glass in borosilicate - Max. temperature: 300°C - BSP threaded.



DN	Face to face (mm)	code	price €
1/2"	90	223004	190,52
3/4"	90	223005	191,48
1"	100	223006	245,69

Level switches



RL 2100 - Float switch

Brass body - Stainless steel float Ø 70 mm - 1" connection - Max. pressure: 6 bar - Max. temperature: 125°C - 2 adjustable reversing switches - Breaking capacity: 250V - 1,5A - Wire outlet Ø 10 mm.

code	price €
101805	64,00



C4 - Stainless steel magnetic float switch

Stainless steel body - Stainless steel 316 float - Max. pressure: 16 bar - Max. temperature: 150°C - 1 adjustable reversing switch - Breaking capacity: 250V - 1,5A.

code	price €
101810	212,00

LR 201 - Stainless steel switch 1/2"

1.4401 stainless steel - Min. liquid density: 0,6 - Max. pressure: 16 bar - Temperature range: -10°C/+120°C - IP65 aluminium junction box - 1/2" BSP gland pack - Contact SPDT 230V AC/DC max. 1 A - BSP threaded.



DN	code	price €
1/2"	290022	130,00
3/4"	290023	144,00

LT 201 - Stainless steel switch 1 1/2"

1.4401 stainless steel - Min. liquid density: 0,7 - Max. pressure: 30 bar - Temperature range: -20°C/+150°C - IP65 aluminium junction box - 1/2" NPT gland pack - Contact SPDT 230V AC 3 A - 30V DC 3 A - Ø 40 mm float - BSP threaded.



DN	code	price €
1 1/2"	290106N	284,30

LR 204 - Flanged stainless steel switch

1.4401 stainless steel - Min. liquid density: 0,7 - Max. pressure: 30 bar - Temperature range: -20°C/+150°C - IP65 aluminium junction box - 1/2" NPT gland pack - Contact SPDT 230V AC 3 A - 30V DC 3 A - Ø 40 mm float - Flanged PN10/16.



DN	code	price €
40	291040N	472,53
50	291050N	503,43
80	291080N	601,73
100	291100N	652,87

Level gauges



L 135 - Brass level gauge set

Max. pressure: 6 bar - Max. temperature: 80°C - NBR gasket - Does not include pipe.



DN	code	price €
1/4" x 10	2311210	41,51
3/8" x 13	2311313	45,91
1.2" x 13	2311413	48,25
1/2" x 16	2311416	48,43
3/4" x 18	2311518	60,25
3/4" x 20	2311520	81,72

T 154 - Plexiglass pipe for level gauge

1000 mm length - Max. temperature: 80°C.



Pipe Ø	code	price €
10	23181010	14,68
13	23181310	14,68
16	23181610	16,16
18	23181810	16,60
20	23182010	19,12

2319 - Brass U protection pipe

1000 mm length.



Pipe Ø	code	price €
10	23191010	107,80
13	23191310	112,88
16	23191610	120,00
18	23191810	127,88
20	23192010	130,40

2312 - Stainless steel level gauge set

1.4401 stainless steel body - Max. pressure: 16 bar - Needle valve & drainer cap - Temperature range: -50°C/+200°C - FKM & PTFE gaskets - Does not include pipe - BSP threaded & sleek pipe.



DN	Pipe Ø	code	price €
3/8"	14	23125314N	258,46
1/2"	14	23125414N	258,46
1/2"	16	23125416N	258,46
1"	20	23125620N	529,23

2314 - Glass pipe for level gauge

Pyrex® glass - Max. pressure: 10 bar - Max. temperature: 80°C - 1500 mm length.



Pipe Ø	Thickness (mm)	code	price €
10	1,5	23141015	36,67
13	2,2	23141315	44,00
14	2,2	23141415	47,67
16	2,5	23141615	49,50
18	2,5	23141815	51,33
20	2,5	23142015	56,83



MG 33 - Stainless steel magnetic level gauge

Stainless steel body and float - Min. fluid density: 0,8 - Scale in aluminium - Plexiglas glass - Stainless steel flanges DN20 connection PN16 - Stainless steel bottom flanges DN50, FKM gasket, 1/2" drain cap - Max. pressure: 16 bar - Max. temperature: 180°C.

Centre distance (mm)	code	price €
800	23201080	954,12
1000	23201100	1 138,03
1200	23201120	1 342,74



Bistable DPDT REED switch

To be mounted on lateral rail gauge - Rating 1A @ 250V - Temperature range: -10°C/+180°C.

code	price €
2328001	244,00

Float

code	price €
981200	186,00

+ 11 € to be added for glass pipe cutting.

+ 15 €/pc to be added for special packaging.

Level gauges (continued)



2315 - NX - Carbon steel level gauge valves

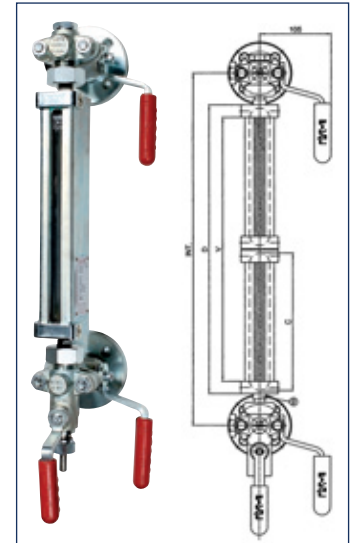
Forged carbon steel A105-1.0460 body - PN40 - Set of upper/lower valves & drainage valve - Plug valve - Graphite tightness - For level gauge box with Ø 16 pipes.

DN	code	price €
15	2315SUPINFBR15	382,95
20	2315SUPINFBR20	394,15
25	2315SUPINFBR25	396,00

2320 - RBF - Reflex carbon steel level gauge

PN40 - Max. temperature +280°C - Carbon steel body - Borosilicate reflex glass B DIN 7081 - Width: 34 mm - Wired graphite glass gasket & support gasket - Connection to valves with Ø 16 pipes - Length: 60 mm.

Size	Int. min. (mm)	C (mm)	D (mm)	V (mm)	code	price €
3	285	165	178	141	2320REFLB1T3	163,44
4	310	190	203	166	2320REFLB1T4	175,90
5	340	220	233	196	2320REFLB1T5	173,90
6	370	250	263	226	2320REFLB1T6	177,14
7	400	280	293	256	2320REFLB1T7	188,58
8	440	320	333	296	2320REFLB1T8	196,50
9	460	340	333	313	2320REFLB1T9	204,44



2330 - TMF - Transparent carbon steel level gauge

PN64 - Max. temperature +280°C - Carbon steel body - Borosilicate transparent glass A DIN 7081 - Width: 30 mm - Wired graphite glass gasket & support gasket - Connection to valves with Ø 16 pipes - Length: 60 mm.

Size	Int. min. (mm)	C (mm)	D (mm)	V (mm)	code	price €
5	340	220	233	196	2330TRANA1T5	447,04
6	370	250	263	226	2330TRANA1T6	453,20
7	400	280	293	256	2330TRANA1T7	474,06

23509 - Borosilicate reflex glasses for level gauge

According to DIN 7081 - Polyprismatic - Supplied with tightness gaskets - Fiber & graphite - Max. pressure: 30 bar - Max. temperature (steam): 243°C - Thickness: 17 mm.



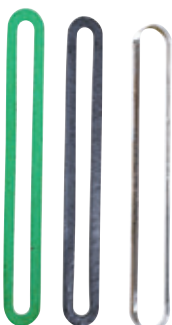
Length (mm)	34 mm width code	30 mm width code	price €
115	2350901	2350911	36,66
140	2350902	2350912	36,80
165	2350903	2350913	37,00
190	2350904	2350914	37,78
220	2350905	2350915	38,84
250	2350906	2350916	43,12
280	2350907	2350917	46,48
320	2350908	2350918	47,50
340	2350909	2350919	55,24



23519 - Borosilicate transparent glasses for level gauge

According to DIN 7081 - Supplied with tightness gaskets - Fiber & graphite - Max. pressure: 34 bar - Max. temperature (steam): 243°C - Thickness: 17 mm.

Length (mm)	34 mm width code	30 mm width code	price €
115	2351901	2351911	37,46
140	2351902	2351912	40,30
165	2351903	2351913	44,40
190	2351904	2351914	45,38
220	2351905	2351915	50,76
250	2351906	2351916	51,20
280	2351907	2351917	56,00
320	2351908	2351918	56,00
340	2351909	2351919	56,50



2352 - Mica for level gauge

Combined with transparent glasses - According to DIN 7081 - Width: 34 mm - Thickness: 0,15-0,20 mm.

Length (mm)	code	price €
115	2352901	28,00
140	2352902	30,00
165	2352903	32,00
190	2352904	39,80
220	2352905	39,80
250	2352906	40,00
280	2352907	40,00
320	2352908	45,78
340	2352909	55,12



Flow meters

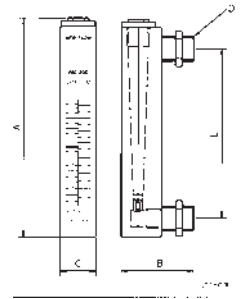
ISO
9002



2281 - Acrylic flow meter with regulating valve FAC type

Acrylic plastic body - Stainless steel floater & fittings - FPM gasket for water, NBR for air - Max. pressure: 10 bar - Temperature range: 0°C/+50°C - Vertical position, upstream flow - Accuracy: 3% full scale - Stainless steel needle valve - 1/4" NPT threaded.

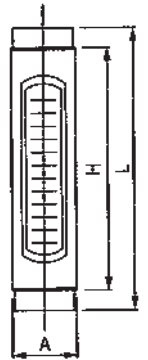
DN	Fluid	Flow	code	price €
1/4"	Water	1-10 l/mn	2281001	133,48
1/4"	Air	1-10 Nm ³ /h	2281002SE	133,48
1/4"	Air	2-20 Nm ³ /h	2281003SE	133,48



2282 - Stainless steel flow meter P type

Stainless steel 316L body - Glass tube - Stainless steel floater - FPM gasket - l/mn graduation for liquid - Max. pressure 6 bar - Max. temperature 100°C - Vertical position, upstream flow - BSP threaded.

DN	Flow (l/mn)	L (mm)	code	price €
3/8"	0,1-10	200	2282001	262,00
1/2"	1-10	240	2282002SE	326,00
3/4"	2-20	280	2282003SE	366,00
1"	5-50	280	2282004SE	430,00
1 1/4"	10-100	280	2282005SE	456,00
1 1/2"	20-200	305	2282006SE	488,00
2"	40-400	315	2282007SE	538,00



2283 - PVC flow meter DFM type

PVC body & tube - PDVF floater - EPDM gasket - l/mn graduation for liquid - Max. pressure: 10 bar - Max. temperature: 60°C - Vertical position, upstream flow - BSP threaded or glued connections.

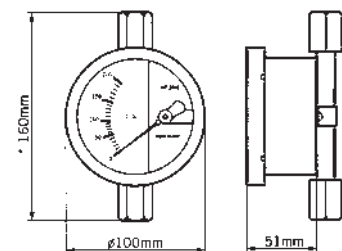
Flow (l/h)	L (mm)	Glued connections		Threaded connections		price €
		Ø	code	Ø	code	
60-600	335	32	2283001SE	1"	2283001N	110,34
100-1000	335	32	2283002	1"	2283002N	110,34
200-2000	335	50	2283003	1 1/2"	2283003N	162,77
300-3000	335	50	2283004	1 1/2"	2283004N	162,77
600-6000	335	63	2283005	2"	2283005N	257,57
1000-10000	335	63	2283006	2"	2283006N	262,22
2500-25000	335	75	2283007	2 1/2"	2283007N	478,37



2284 - Metal tube flow meter MF200E type

Stainless steel 316L body - Stainless steel box IP65 - Max. pressure: 10 bar - Temperature range: -40°C/+180°C - Vertical position, upstream flow - Scale for liquid in l/h - Accuracy: +/- 2% - BSP threaded connections.

DN	Range l/h	code	price €
1/2"	15-150	2284001	388,31
1/2"	40-400	2284002	388,31
1/2"	60-600	2284003	388,31
3/4"	75-750	2284004	391,94
1"	100-1000	2284005	388,31
1 1/2"	200-2000	2284006	436,83
1 1/2"	400-4000	2284007	474,46



Manometers

Stainless steel box.

Industry

Concerned by 97/23/CE directive (article 3, §3) - Brass pipe & fitting - Tin welding - Max. temperature: 60°C - Class 1 for Ø 100 - Class 1,6 for Ø 63 - Polycarbonate glass.



Ø 63 - Axial

Pressure (bar/PSI)	Ø connection	code	price €
-1 - 0	1/4"	1623001	11,00
0 - 1,6	1/4"	1623002	11,00
0 - 2,5	1/4"	1623003	11,00
0 - 4	1/4"	1623004	11,00
0 - 6	1/4"	1623005	11,00
0 - 10	1/4"	1623006	11,00
0 - 16	1/4"	1623007	11,00
0 - 25	1/4"	1623008	11,00
0 - 40	1/4"	1623009	11,00
0 - 60	1/4"	1623010	11,00
0 - 100	1/4"	1623011	11,00
0 - 160	1/4"	1623012	11,00



Ø 63 - Radial

Pressure (bar/PSI)	Ø connection	code	price €
-1 - 0	1/4"	1613001	11,00
0 - 1,6	1/4"	1613002	11,00
0 - 2,5	1/4"	1613003	11,00
0 - 4	1/4"	1613004	11,00
0 - 6	1/4"	1613005	11,00
0 - 10	1/4"	1613006	11,00
0 - 16	1/4"	1613007	11,00
0 - 25	1/4"	1613008	11,00
0 - 40	1/4"	1613009	11,00
0 - 60	1/4"	1613010	11,00
0 - 100	1/4"	1613011	11,00
0 - 160	1/4"	1613012	11,00



Ø 100 - Axial

Pressure (bar)	Ø connection	code	price €
-1 - 0	1/2"	1625001	39,00
0 - 1,6	1/2"	1625002	39,00
0 - 2,5	1/2"	1625003	39,00
0 - 4	1/2"	1625004	39,00
0 - 6	1/2"	1625005	39,00
0 - 10	1/2"	1625006	39,00
0 - 16	1/2"	1625007	39,00



Ø 100 - Radial

Pressure (bar)	Ø connection	code	price €
-1 - 0	1/2"	1615001	39,80
0 - 1,6	1/2"	1615002	39,80
0 - 2,5	1/2"	1615003	39,80
0 - 4	1/2"	1615004	39,80
0 - 6	1/2"	1615005	39,80
0 - 10	1/2"	1615006	39,80
0 - 16	1/2"	1615007	39,80
0 - 25	1/2"	1615008	39,80
0 - 40	1/2"	1615009	39,80
0 - 60	1/2"	1615010	39,80
0 - 100	1/2"	1615011	39,80
0 - 160	1/2"	1615012	39,80

Full stainless steel - Dry box (refillable) - Max. temperature: 100°C (room temperature: -20°C / +60°C) - Stainless steel mechanism - Class 1 - Securit glass.



Ø 100 - Radial

Pressure (bar)	Ø connection	code	price €
0 - 1,6	1/2"	1617002	79,90
0 - 2,5	1/2"	1617003	79,90
0 - 4	1/2"	1617004	79,90
0 - 6	1/2"	1617005	79,90
0 - 10	1/2"	1617006	79,90
0 - 16	1/2"	1617007	79,90
0 - 25	1/2"	1617008	79,90
0 - 40	1/2"	1617009	79,90
0 - 60	1/2"	1617010	79,90



High pressure valve

Brass - PN250 - Max. temperature: 120°C.

Ø	code	price €
1/2"	1390004	38,40

Steam

Manometer Ø 100 - Radial

Stainless steel box - Max. temperature: 180°C - Class 1,6.



Pressure (bar)	Ø connection	code	price €
0 - 10	1/2"	981703	74,60
0 - 25	1/2"	981705	74,60



Coil siphon

DIN 16282 C type - Max. temperature: 300°C (at 80 bar) - Ø connection M1/2" x F1/2".

	code	price €
Carbon steel	981712	50,20
Stainless steel	981713	187,00



Valve

DIN 16270 A type - Carbon steel - PN400 - Max. temperature: 200°C - Ø connection 1/2".

	code	price €
Carbon steel	981710	46,60
Stainless steel	981717	154,40

Gas

With cap for gas - Class 2,5 for Ø 63 - Class 1,6 for Ø 100.



Ø 63 - Radial

Pressure (mbar)	Ø connection	code	price €
0 - 60	1/4"	1633001	61,00
0 - 100	1/4"	1633002	61,00
0 - 250	1/4"	1633003	61,00
0 - 400	1/4"	1633004	61,00
0 - 600	1/4"	1633005	61,00



Ø 100 - Radial

Pressure (mbar)	Ø connection	code	price €
0 - 60	1/2"	1635001	79,00
0 - 100	1/2"	1635002	79,00
0 - 250	1/2"	1635003	79,00
0 - 400	1/2"	1635004	79,00
0 - 600	1/2"	1635005	79,00

Fittings and couplings

Stainless steel threaded fittings

Products excluded from 97/23/CE directive - Male: BSPT threaded - Female: BSPP threaded.

■ 316 stainless steel - PN20 - 150 lbs - BSP

Except 2039, 2034, 2042, 2040, 2038, 2041: 316L stainless steel.

2039 - Standard welding nipple



Ø	1/4"	3/8"	1/2"	3/4"	1"	1"1/4"	1"1/2"	2"	2"1/2"	3"	4"
Length (mm)	22	23	27	33	35	36	41	46	55	70	80
pack	10	10	10	10	5	5	5	5	1	1	1
code	2039002	2039003	2039004	2039005	2039006	2039007	2039008	2039009	2039010	2039011	2039012
price €	0,81	0,89	1,12	1,44	2,01	2,59	3,11	4,86	7,18	11,18	17,89

2034 - Welding nipple - L = 50 mm



Ø	1/4"	3/8"	1/2"	3/4"	1"	1"1/4"	1"1/2"	2"
pack	10	10	10	10	5	5	5	5
code	2034002	2034003	2034004	2034005	2034006	2034007	2034008	2034009
price €	1,07	1,20	1,54	1,83	2,53	3,19	3,55	5,12

2015 - Bright socket



Ø	1/8"	1/4"	3/8"	1/2"	3/4"	1"	1"1/4"	1"1/2"	2"	2"1/2"	3"	4"
Length (mm)	18	25	26	34	36	43	48	48	56	65	71	83
pack	10	10	10	10	10	5	5	5	5	1	1	1
code	2015001	2015002	2015003	2015004	2015005	2015006	2015007	2015008	2015009	2015010	2015011	2015012
price €	1,20	1,20	1,38	2,17	2,53	4,13	5,64	6,35	9,27	15,25	19,38	33,17

2017 - Half socket



Ø	1/8"	1/4"	3/8"	1/2"	3/4"	1"	1"1/4"	1"1/2"	2"
Length (mm)	10	11	13	16	18	20	22	23	27
pack	10	10	10	10	10	5	5	5	5
code	2017001	2017002	2017003	2017004	2017005	2017006	2017007	2017008	2017009
price €	0,84	0,84	1,20	1,62	1,78	3,11	3,94	4,44	6,53

2040 - Standard barrel nipple



Ø	1/4"	3/8"	1/2"	3/4"	1"	1"1/4"	1"1/2"	2"	2"1/2"	3"	4"
Length (mm)	40	40	60	60	60	80	80	100	100	120	120
pack	10	10	10	10	10	5	5	5	1	1	1
code	2040002	2040003	2040004	2040005	2040006	2040007	2040008	2040009	2040010	2040011	2040012
price €	1,23	1,33	1,98	2,32	3,26	4,96	5,54	9,40	12,35	18,44	26,43

2038 - Barrel nipple



Ø	1/4"	3/8"	1/2"	3/4"	1"	1"1/4"	1"1/2"	2"
Length (mm)	100	100	100	100	100	100	100	100
pack	10	10	10	10	5	5	5	5
code	2038002	2038003	2038004	2038005	2038006	2038007	2038008	2038009
price €	1,79	2,04	2,69	3,24	4,62	5,82	6,50	9,40

2030 - Hexagon nipple



Ø	1/8"	1/4"	3/8"	1/2"	3/4"	1"	1"1/4"	1"1/2"	2"
pack	10	10	10	10	10	5	5	5	5
code	2030001	2030002	2030003	2030004	2030005	2030006	2030007	2030008	2030009
price €	0,71	0,97	1,12	2,12	2,48	4,13	5,51	6,19	8,28

2001 - Elbow 90° female/female



Ø	1/8"	1/4"	3/8"	1/2"	3/4"	1"	1"1/4"	1"1/2"	2"	2"1/2"	3"	4"
pack	10	10	10	10	10	5	5	5	5	1	1	1
code	2001001	2001002	2001003	2001004	2001005	2001006	2001007	2001008	2001009	2001010	2001011	2001012
price €	0,65	1,02	1,41	1,70	2,61	4,15	6,14	7,84	12,64	21,55	31,13	50,30

Stainless steel threaded fittings (continued)

2010 - Elbow 90° male/female



Ø	1/8"	1/4"	3/8"	1/2"	3/4"	1"	1"1/4"	1"1/2"	2"	2"1/2"	3"
pack	10	10	10	10	10	5	5	5	5	1	1
code	2010001	2010002	2010003	2010004	2010005	2010006	2010007	2010008	2010009	2010010	2010011
price €	0,91	1,28	1,75	2,09	3,06	5,04	6,53	8,88	12,64	29,72	50,80

2003 - Female tee



Ø	1/8"	1/4"	3/8"	1/2"	3/4"	1"	1"1/4"	1"1/2"	2"	2"1/2"	3"	4"
pack	10	10	10	10	10	5	5	5	5	1	1	1
code	2003001	2003002	2003003	2003004	2003005	2003006	2003007	2003008	2003009	2003010	2003011	2003012
price €	0,97	1,46	2,30	2,30	3,47	5,41	7,84	10,29	15,80	26,75	39,46	61,25

2037 - Hexagon cap female



Ø	1/4"	3/8"	1/2"	3/4"	1"	1"1/4"	1"1/2"	2"
pack	10	10	10	10	5	5	5	5
code	2037002	2037003	2037004	2037005	2037006	2037007	2037008	2037009
price €	0,73	0,99	1,28	1,65	3,06	4,62	6,06	8,57

2022 - Hexagon plug



Ø	1/2"	3/4"	1"	1"1/4"	1"1/2"	2"
pack	10	10	5	5	5	5
code	2022004	2022005	2022006	2022007	2022008	2022009
price €	1,49	1,93	2,95	4,39	5,69	8,31

2023 - Hexagon plug (plain)



Ø	1/8"	1/4"	3/8"	1/2"	3/4"	1"	1"1/4"	1"1/2"	2"
pack	10	10	10	10	10	5	5	5	5
code	2023001	2023002	2023003	2023004	2023005	2023006	2023007	2023008	2023009
price €	0,76	1,02	1,18	2,14	3,71	6,35	10,87	14,63	25,28

2036 - Hexagon nut



Ø	1/8"	1/4"	3/8"	1/2"	3/4"	1"	1"1/4"	1"1/2"	2"
pack	10	10	10	10	10	5	5	5	5
code	2036001	2036002	2036003	2036004	2036005	2036006	2036007	2036008	2036009
price €	0,37	0,42	0,63	0,78	1,15	1,62	2,69	2,90	4,70

2035 - Hose nozzle



Ø	1/4"	3/8"	1/2"	3/4"	1"	1"1/4"	1"1/2"	2"	
hose		8,9	11,5	14	19,5	26	34	40	52
pack		10	10	10	10	5	5	5	5
code		2035002	2035003	2035004	2035005	2035006	2035007	2035008	2035009
price €		1,12	1,54	2,17	3,24	4,83	6,76	9,17	14,44

2013 - Reduced nipple female/female



Ø	1/4"-1/8"	3/8"-1/4"	1/2"-3/8"	3/4"-1/2"	1"-3/4"	1"1/4"-1"	1"1/2"-1"1/4"	2"-1"1/2"
pack	10	10	10	10	10	5	5	5
code	2013002	2013003	2013004	2013005	2013006	2013007	2013008	2013009
price €	0,89	1,10	2,04	2,51	3,89	5,85	7,70	11,28

2014 - Double reduced nipple female/female



Ø	3/8"-1/8"	1/2"-1/4"	3/4"-3/8"	1"-1/2"	1"1/4"-3/4"	1"1/2"-1"	2"-1"1/4"
pack	10	10	10	5	5	5	5
code	2014003	2014004	2014005	2014006	2014007	2014008	2014009
price €	1,10	2,04	2,51	3,89	5,85	7,70	11,28

2033 - Reduced nipple female/male



Ø	1/4"-1/8"	3/8"-1/4"	1/2"-3/8"	3/4"-1/2"	1"-3/4"	1"1/4"-1"	1"1/2"-1"1/4"	2"-1"1/2"
pack	10	10	10	10	10	5	5	5
code	2033002	2033003	2033004	2033005	2033006	2033007	2033008	2033009
price €	1,70	2,06	2,98	3,68	5,17	7,42	10,53	13,11

2021 - Reduced nipple male/female



Ø	1/4"-1/8"	3/8"-1/4"	1/2"-3/8"	3/4"-1/2"	1"-3/4"	1"1/4"-1"	1"1/2-1"1/4"	2"-1"1/2"
pack	10	10	10	10	5	5	5	5
code	2021002	2021003	2021004	2021005	2021006	2021007	2021008	2021009
price €	0,73	0,94	1,38	1,80	3,03	4,73	4,70	8,54

2024 - Double reduced nipple male/female



Ø	3/8"-1/8"	1/2"-1/4"	3/4"-3/8"	1"-1/2"	1"1/4-3/4"	1"1/2-1"	2"-1"1/4"
pack	10	10	10	5	5	5	5
code	2024003	2024004	2024005	2024006	2024007	2024008	2024009
price €	0,94	1,38	1,80	3,03	4,73	4,70	8,54

2031 - Reduced nipple male/male



Ø	1/4"-1/8"	3/8"-1/4"	1/2"-3/8"	3/4"-1/2"	1"-3/4"	1"1/4-1"	1"1/2-1"1/4"	2"-1"1/2"
pack	10	10	10	10	5	5	5	5
code	2031002	2031003	2031004	2031005	2031006	2031007	2031008	2031009
price €	0,91	1,20	1,80	2,48	3,58	5,33	6,58	8,93

2032 - Double reduced nipple male/male



Ø	3/8"-1/8"	1/2"-1/4"	3/4"-3/8"	1"-1/2"	1"1/4-3/4"	1"1/2-1"	2"-1"1/4"
pack	10	10	10	5	5	5	5
code	2032003	2032004	2032005	2032006	2032007	2032008	2032009
price €	1,20	1,80	2,48	3,58	5,33	6,58	8,93

316 stainless steel - PN20 - 150 lbs - BSP - Conical bearing

Pack : individual

2025 - Union female/female



Ø	1/4"	3/8"	1/2"	3/4"	1"	1"1/4"	1"1/2"	2"
Length (mm)	42	45	48	52	58	65	70	78
code	2025002	2025003	2025004	2025005	2025006	2025007	2025008	2025009
price €	3,29	4,70	5,64	7,52	11,18	13,89	17,58	26,54

2026 - Union male/female



Ø	1/4"	3/8"	1/2"	3/4"	1"	1"1/4"	1"1/2"	2"
Length (mm)	55	58	65	70	79	89	94	104
code	2026002	2026003	2026004	2026005	2026006	2026007	2026008	2026009
price €	3,47	5,01	6,16	8,75	12,17	15,38	18,52	29,10

2062 - Union male/male



Ø	1/4"	3/8"	1/2"	3/4"	1"	1"1/4"	1"1/2"	2"
Length (mm)	56	58	67	73	81	90	89	99
code	2062002	2062003	2062004	2062005	2062006	2062007	2062008	2062009
price €	4,63	6,26	7,07	10,37	14,25	19,24	23,34	36,04

2027 - Welding threaded union



Ø	3/8"-10	1/2"-15	3/4"-20	1"-25	1"1/4-32	1"1/2-40	2"-50
Length (mm)	55	62	66	76	84	89	100
code	2027310	2027415	2027520	2027625	2027732	2027840	2027950
price €	5,12	6,35	9,45	12,54	16,22	19,51	29,83

2028 - Welding threaded union



Ø	3/8"-10	1/2"-15	3/4"-20	1"-25	1"1/4-32	1"1/2-40	2"-50
Length (mm)	42	45	48	55	59	63	71
code	2028310	2028415	2028520	2028625	2028732	2028840	2028950
price €	4,78	5,75	8,23	11,57	14,73	18,57	27,27

2029 - Welding union



Ø	10	15	20	25	32	40	50
Length (mm)	38	41	43	51	54	58	66
code	2029010	2029015	2029020	2029025	2029032	2029040	2029050
price €	5,09	5,93	8,67	12,07	14,50	18,34	31,05

■ Bright 3 pieces 1000 WOG - 316L stainless steel -
316 stainless steel nut - Conical bearing

Pack : individual



2065 - Union BSP female/female

Ø	1/4"	3/8"	1/2"	3/4"	1"	1"1/4"	1"1/2"	2"
code	2065002	2065003	2065004	2065005	2065006	2065007	2065008	2065009
price €	6,02	7,54	9,99	12,47	18,18	20,79	30,01	34,81



2066 - Union male/BSP female

Ø	1/4"	3/8"	1/2"	3/4"	1"	1"1/4"	1"1/2"	2"
code	2066002	2066003	2066004	2066005	2066006	2066007	2066008	2066009
price €	5,68	6,93	9,09	11,22	15,86	20,18	24,95	34,49



2064 - Union male/BSP male

Ø	3/8"	1/2"	3/4"	1"	1"1/4"	1"1/2"	2"
code	2064003	2064004	2064005	2064006	2064007	2064008	2064009
price €	7,54	9,70	12,47	17,86	22,49	27,56	38,03



2068 - Welding/BSP female union

Ø	3/8"	1/2"	3/4"	1"	1"1/4"	1"1/2"	2"
code	2068310	2068415	2068520	2068625	2068732	2068840	2068950
price €	6,32	8,16	10,31	14,31	18,18	21,88	30,01



2067 - Welding/BSP male union

Ø	3/8"	1/2"	3/4"	1"	1"1/4"	1"1/2"	2"
code	2067310	2067415	2067520	2067625	2067732	2067840	2067950
price €	6,93	8,95	11,54	16,34	20,31	24,49	33,87



2069 - Butt welding/butt welding union

Ø	10	15	20	25	32	40	50
code	2069010	2069015	2069020	2069025	2069032	2069040	2069050
price €	6,77	8,61	10,79	14,92	18,47	22,79	30,17

Express fittings

Distance between claws: 41 mm - NF-EN 29573 - Use: water and compressed air - Excluded from 97/23/CE directive.

■ Brass without gasket

Max. pressure: 10 bar - Max. temperature: 60°C.

2285 - Hose coupler

Ø	7	9	11	13	16	19	22	25
code	2285007	2285009	2285011	2285013	2285016	2285019	2285022	2285025
price €	2,29	1,83	2,09	2,29	2,60	3,03	3,23	3,23

2286 - Male coupler

Ø	1/4"	3/8"	1/2"	3/4"	1"	1"1/4"
code	2286002	2286003	2286004	2286005	2286006	2286007
price €	1,97	1,98	2,40	2,40	2,49	3,86

2287 - Female coupler

Ø	1/4"	3/8"	1/2"	3/4"	1"	1"1/4"
code	2287002	2287003	2287004	2287005	2287006	2287007
price €	2,03	1,97	1,94	2,51	2,74	3,69



2288 - Cap coupler

Distance between claws: 41 mm

For all references	
code	2288001
price €	1,63

■ Brass with mounted NBR gasket

Max. pressure: 10 bar - Max. temperature: 60°C.

2280 - Hose coupler

Ø	7	9	11	13	16	19	22	25
code	2280007	2280009	2280011	2280013	2280016	2280019	2280022	2280025
price €	1,83	2,49	2,54	2,54	2,66	3,17	3,03	3,43



Spare gasket - NBR

For all references	
code	9830984
price €	0,64

2281 - Male coupler

Ø	1/4"	3/8"	1/2"	3/4"	1"	1"1/4"
code	2281002	2281003	2281004	2281005	2281006	2281007
price €	2,09	2,31	2,46	2,40	2,91	3,94

Black gasket Ø 15 w / reduced hole - NBR



For all references	
code	9830983
price €	0,64

2282 - Female coupler

Ø	1/4"	3/8"	1/2"	3/4"	1"	1"1/4"
code	2282002	2282003	2282004	2282005	2282006	2282007
price €	1,89	1,77	2,06	2,63	2,91	4,00



2283 - Cap coupler

Distance between claws: 41 mm.

For all references	
code	2283001
price €	2,20

■ Stainless steel 316 with FKM gasket

Max. pressure: 10 bar - Max. temperature: 150°C.

2290 - Hose coupler

Ø	16	19	25
code	2290016	2290019	2290025
price €	13,37	13,37	15,17



2291 - Male coupler

Ø	1/2"	3/4"	1"
code	2291004	2291005	2291006
price €	13,94	14,94	15,77

2292 - Female coupler

Ø	1/2"	3/4"	1"
code	2292004	2292005	2292006
price €	13,09	14,23	14,43



2293 - Cap coupler

For all references	
code	2293001
price €	14,54

98440 - Claw clamp

Ref.	15	17	20	23	26	29	32	36	38
Ø ext.	14-16	16-18	19-21	22-24	25-27	28-30	31-33	34-37	37-39
Ø int.	7	9	10	11	13	16-19	19	22	25
code	9844015	9844017	9844020	9844023	9844026	9844029	9844032	9844036	9844038
price €	0,44	0,43	0,50	0,67	0,66	0,77	1,00	1,10	1,20



Cam-lock couplings

MIL 27487 - Excluded from 97/23/CE directive.

Recommended pressure (bar):

Ø	1/2"	3/4" to 2"	2"1/2"	3"	4"
Aluminium	11	16	11	9	7
316 stainless steel	11	18	16	14	14

Aluminium cam-lock couplings

Brass cam & NBR gasket - Max. temperature: 60°C.

2201 - Female adaptor A



Ø	1/2"	3/4"	1"	1"1/4"	1"1/2"	2"	2"1/2"	3"	4"
code	2201004	2201005	2201006	2201007	2201008	2201009	2201010	2201011	2201012
price €	2,38	2,66	2,36	3,40	3,26	3,68	6,08	6,26	10,78

2202 - Male coupling B



Ø	1/2"	3/4"	1"	1"1/4"	1"1/2"	2"	2"1/2"	3"	4"
code	2202004	2202005	2202006	2202007	2202008	2202009	2202010	2202011	2202012
price €	5,82	5,56	5,38	8,54	8,26	8,50	11,86	14,60	15,80

2203 - Hose coupling C



Ø	1/2"	3/4"	1"	1"1/4"	1"1/2"	2"	2"1/2"	3"	4"
code	2203004	2203005	2203006	2203007	2203008	2203009	2203010	2203011	2203012
price €	4,90	3,88	5,28	7,56	7,44	9,50	10,92	12,92	20,26

2204 - Female coupling D



Ø	1/2"	3/4"	1"	1"1/4"	1"1/2"	2"	2"1/2"	3"	4"
code	2204004	2204005	2204006	2204007	2204008	2204009	2204010	2204011	2204012
price €	5,94	5,88	5,26	8,02	7,50	8,66	10,08	12,84	18,80

2205 - Hose adaptor E



Ø	1/2"	3/4"	1"	1"1/4"	1"1/2"	2"	2"1/2"	3"	4"
code	2205004	2205005	2205006	2205007	2205008	2205009	2205010	2205011	2205012
price €	2,38	2,48	3,26	3,98	3,40	4,92	7,88	9,94	16,36

2206 - Male adaptor F



Ø	1/2"	3/4"	1"	1"1/4"	1"1/2"	2"	2"1/2"	3"	4"
code	2206004	2206005	2206006	2206007	2206008	2206009	2206010	2206011	2206012
price €	2,96	2,60	2,60	4,72	3,76	4,62	7,08	8,66	13,00

2207 - Cap coupler DC



Ø	1/2"	3/4"	1"	1"1/4"	1"1/2"	2"	2"1/2"	3"	4"
code	2207004	2207005	2207006	2207007	2207008	2207009	2207010	2207011	2207012
price €	5,08	5,08	5,74	8,14	6,50	7,92	10,02	10,86	14,66

2208 - Plug adaptor DP



Ø	1/2"	3/4"	1"	1"1/4"	1"1/2"	2"	2"1/2"	3"	4"
code	2208004	2208005	2208006	2208007	2208008	2208009	2208010	2208011	2208012
price €	3,40	2,62	1,86	3,20	3,10	3,52	4,92	7,08	12,78

■ Brass cam-lock couplings

Brass cams - NBR gasket - Max. temperature: 60°C.



2261 - Female adaptor A

Ø	1/2"	3/4"	1"	1"1/4	1"1/2	2"	2"1/2	3"	4"
code	2261004	2261005	2261006	2261007	2261008	2261009	2261010	2261011	2261012
price €	5,26	3,88	4,80	8,20	9,40	12,02	18,00	18,68	33,82



2262 - Male coupling B

Ø	1/2"*	3/4"	1"	1"1/4	1"1/2	2"	2"1/2	3"	4"
code	2262004	2262005	2262006	2262007	2262008	2262009	2262010	2262011	2262012
price €	10,86	7,14	8,86	12,50	14,74	19,20	18,44	28,84	41,16

* Stainless steel cams.



2263 - Hose coupling C

Ø	1/2"*	3/4"*	1"*	1"1/4	1"1/2	2"	2"1/2	3"	4"
code	2263004	2263005	2263006	2263007	2263008	2263009	2263010	2263011	2263012
price €	9,20	10,72	10,06	14,80	14,08	23,60	31,60	42,62	52,30

* Stainless steel cams.



2264 - Female coupling D

Ø	1/2"	3/4"*	1"	1"1/4	1"1/2	2"	2"1/2	3"	4"
code	2264004	2264005	2264006	2264007	2264008	2264009	2264010	2264011	2264012
price €	5,76	11,16	9,82	16,20	17,50	20,60	22,96	36,72	51,76

* Stainless steel cams.



2265 - Hose adaptor E

Ø	1/2"	3/4"	1"	1"1/4	1"1/2	2"	2"1/2	3"	4"
code	2265004	2265005	2265006	2265007	2265008	2265009	2265010	2265011	2265012
price €	5,74	5,10	6,78	10,26	8,80	13,50	21,92	30,56	41,32



2266 - Male adaptor F

Ø	1/2"	3/4"	1"	1"1/4	1"1/2	2"	2"1/2	3"	4"
code	2266004	2266005	2266006	2266007	2266008	2266009	2266010	2266011	2266012
price €	4,42	4,50	6,00	8,72	9,98	16,90	23,80	24,54	43,56

2267 - Cap coupling DC



Ø	1/2"	3/4"*	1"	1"1/4	1"1/2	2"	2"1/2	3"	4"
code	2267004	2267005	2267006	2267007	2267008	2267009	2267010	2267011	2267012
price €	9,56	7,16	8,56	13,00	14,80	18,80	17,50	27,22	28,78

* Stainless steel cams.



2268 - Plug adaptor DP

Ø	1/2"	3/4"	1"	1"1/4	1"1/2	2"	2"1/2	3"	4"
code	2268004	2268005	2268006	2268007	2268008	2268009	2268010	2268011	2268012
price €	3,38	4,50	5,76	8,50	8,00	13,40	12,02	20,42	27,38

Cam-lock couplings (continued)

■ 316 stainless steel cam-lock couplings

"Lost wax" moulding - Stainless steel cams - NBR gasket - Max. temperature: 60°C.

2241 - Female adaptor A



Ø	1/2"	3/4"	1"	1"1/4	1"1/2	2"	2"1/2	3"	4"
code	2241004	2241005	2241006	2241007	2241008	2241009	2241010	2241011	2241012
price €	4,64	5,80	7,62	11,22	12,48	17,44	28,80	34,00	52,00

2242 - Male coupling B



Ø	1/2"	3/4"	1"	1"1/4	1"1/2	2"	2"1/2	3"	4"
code	2242004	2242005	2242006	2242007	2242008	2242009	2242010	2242011	2242012
price €	9,78	10,70	14,48	18,80	22,06	27,60	40,40	44,34	61,60

2243 - Hose coupling C



Ø	1/2"	3/4"	1"	1"1/4	1"1/2	2"	2"1/2	3"	4"
code	2243004	2243005	2243006	2243007	2243008	2243009	2243010	2243011	2243012
price €	9,94	10,42	12,50	20,20	20,08	29,00	40,22	55,56	70,40

2244 - Female coupling D



Ø	1/2"	3/4"	1"	1"1/4	1"1/2	2"	2"1/2	3"	4"
code	2244004	2244005	2244006	2244007	2244008	2244009	2244010	2244011	2244012
price €	12,52	11,38	13,20	21,44	23,20	28,00	38,00	50,28	76,60

2245 - Hose adaptor E



Ø	1/2"	3/4"	1"	1"1/4	1"1/2	2"	2"1/2	3"	4"
code	2245004	2245005	2245006	2245007	2245008	2245009	2245010	2245011	2245012
price €	6,14	5,50	8,98	14,60	16,20	23,80	35,60	46,70	68,40

2246 - Male adaptor F



Ø	1/2"	3/4"	1"	1"1/4	1"1/2	2"	2"1/2	3"	4"
code	2246004	2246005	2246006	2246007	2246008	2246009	2246010	2246011	2246012
price €	9,16	8,48	9,56	11,16	14,60	20,80	41,20	45,08	69,20

2247 - Cap coupling DC



Ø	1/2"	3/4"	1"	1"1/4	1"1/2	2"	2"1/2	3"	4"
code	2247004	2247005	2247006	2247007	2247008	2247009	2247010	2247011	2247012
price €	10,06	10,44	9,80	18,46	19,80	20,20	32,06	40,60	64,80

2248 - Cap adaptor DP



Ø	1/2"	3/4"	1"	1"1/4	1"1/2	2"	2"1/2	3"	4"
code	2248004	2248005	2248006	2248007	2248008	2248009	2248010	2248011	2248012
price €	3,98	3,80	5,38	8,72	9,80	16,00	21,02	23,26	32,56

SUMMARY



Valves for industry, HVAC & water works

- Carbon steel & stainless steel ball valves — pages 10 to 17
- Cast iron ball valves — page 18
- PVC ball valves — page 18
- Brass ball valves — page 18
- Butterfly valves — pages 19 to 23
- Needle valves — page 23
- Floating ball valves — page 24
- Gate valve — page 24
- Globe valves — pages 24 to 25
- Forged valves — pages 26 to 27
- Y-strainers — page 28
- Check valves — pages 29 to 32
- Expansion joints — pages 32 to 33
- Knife gate valves — pages 34 to 36
- Connections — pages 37 to 38



Actuated valves

- Pneumatic actuators — page 40
- Accessories for pneumatic actuators — pages 40 to 42
- Pneumatic actuated valves — pages 43 to 52
- Electric actuators — pages 53 to 55
- Electric actuated valves — pages 56 to 64
- Solenoid valves — pages 65 to 66
- On/off pneumatic actuated valves — page 67
- Control valves — page 68



Industry

- Safety valves — pages 70 to 71
- Overflow valves — pages 71 to 72
- Pressure reducing valves — pages 72 to 73
- Gas equipment — pages 74 to 75
- Steam equipment — pages 76 to 79
- Compressed air equipment — pages 80 to 81
- Instrumentation — pages 82 to 86
- Fittings and couplings — pages 87 to 96



Pumps & garden

- Ecop range — pages 98 to 99
- Spid'O range — pages 99 to 105
- Surface pumps — pages 106 to 110
- Pressurisation sets — pages 111 to 112
- Submersible pumps — pages 113 to 123
- Swimming pool pumps — pages 124 to 125
- Transfer pumps — pages 126 to 127
- Control panels — pages 128 to 129
- Pressurised water tanks — pages 130 to 131
- Automatic devices for domestic pumps — pages 132 to 133
- Level control — page 134
- Pumps accessories — page 135
- Manometers — page 136



Connections

- Fittings ————— pages 138 to 158
- Distribution manifolds ————— pages 159 to 161
- Galvanized carbon steel system - Serti-Steel — pages 162 to 165
- Multilayer pipes systems ————— pages 166 to 171
- Flexible hoses & stainless steel flexible pipes — pages 172 to 178



Valves for building

- Ball valves ————— pages 180 to 183
- Gate valves ————— page 184
- Globe valve ————— page 184
- Manual control valve ————— page 184
- Bibcock valves ————— page 185
- Shut-off valves ————— page 186
- Y-strainers ————— page 186
- Check valves ————— page 187
- PVC valves ————— page 188



Plumbing

- Water heater safety ————— page 214
- Thermostatic mixing valves ————— page 215
- Pressure reducing valves ————— page 216
- Hammer arresters ————— page 216
- Water meters ————— page 217
- Washing machine & toilet supplies ————— pages 218 to 219
- Water filtration ————— pages 220 to 225

LENNTECH

info@lennotech.com

www.lennotech.com

Tel. +31-15-261.09.00

Fax. +31-15-261.62.89